

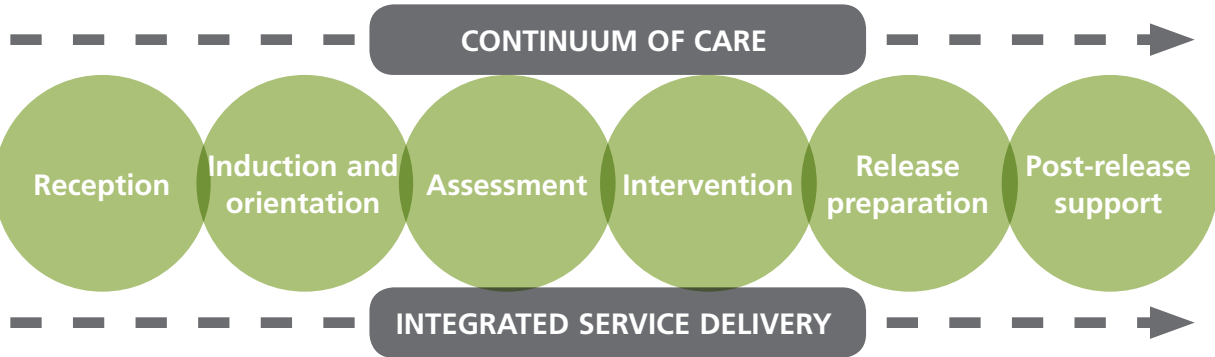




# Working together at Ravenhall

## GEO Continuum of Care

The GEO Continuum of Care (CoC) model provides enhanced in-prison offender rehabilitation, education and vocational training, health care and reintegration services, integrated with continued post-release support.

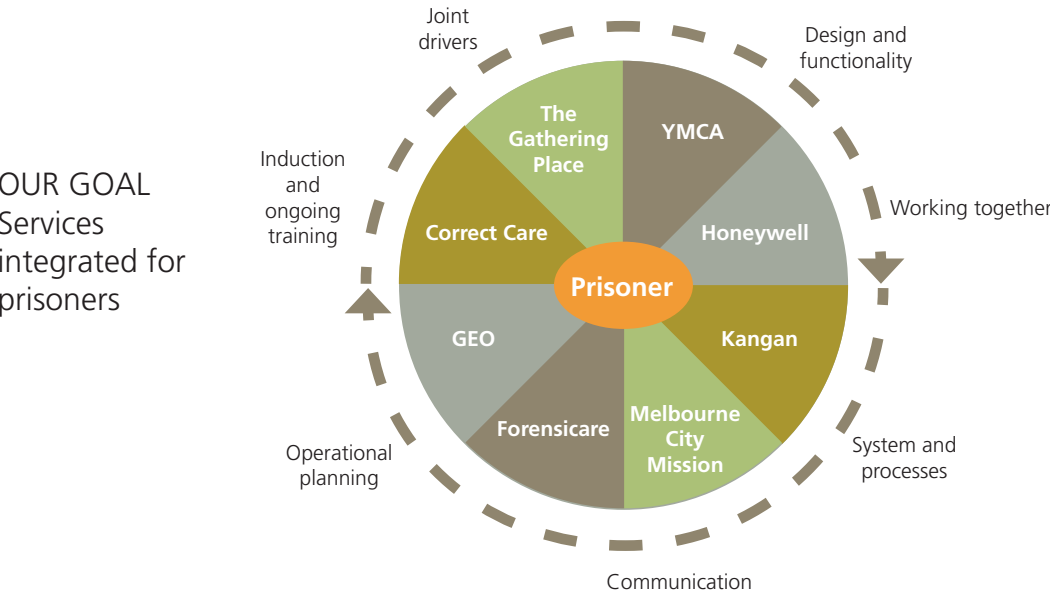


## Integrated service delivery

Ravenhall Correctional Centre provides integrated service delivery based on a shared philosophy and vision that have been developed and formally agreed by all Service Providers

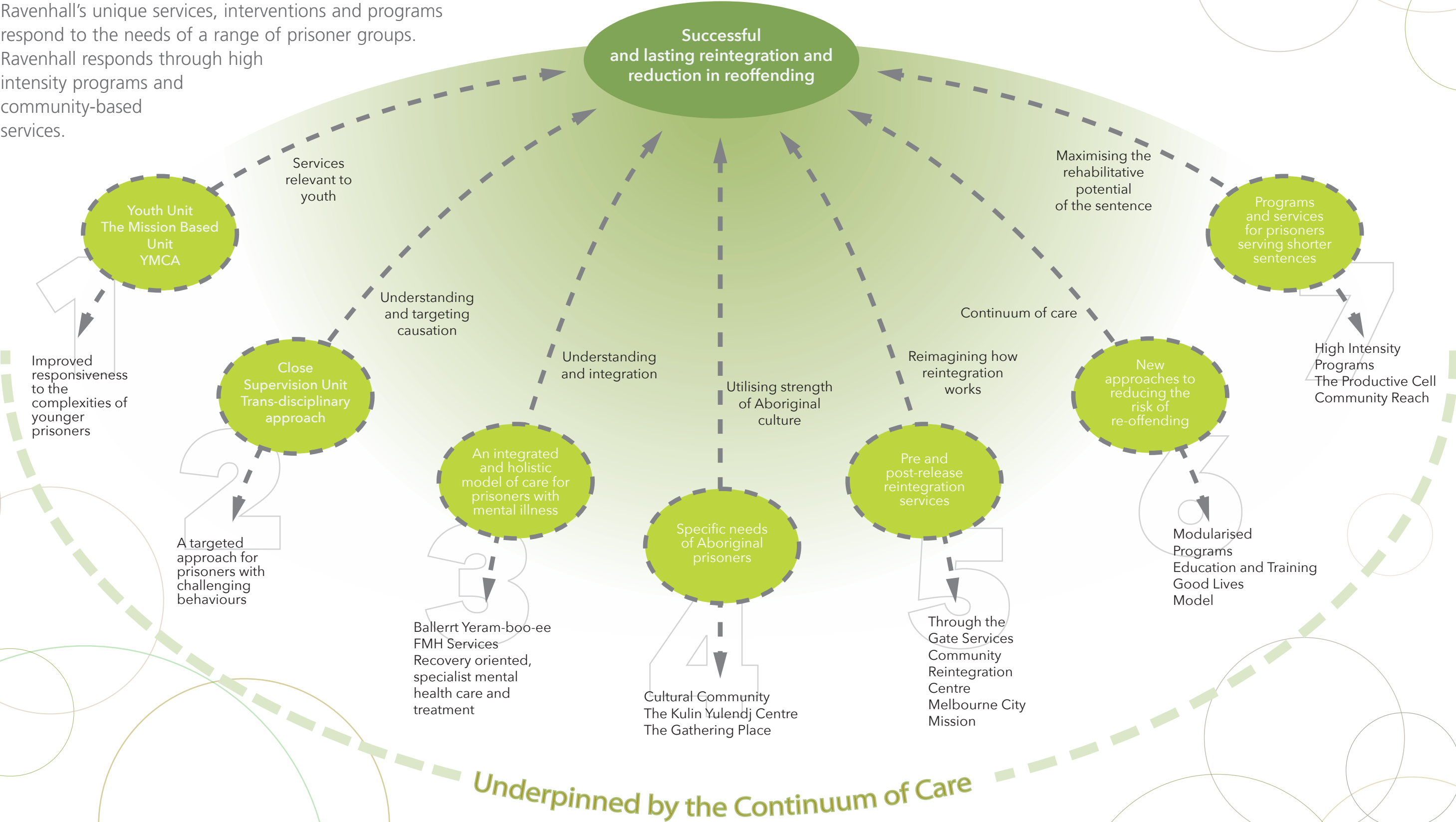
The primary focus is about responding in partnership with the prisoner to achieve shared outcomes.

Operational planning, systems and processes, together with good communication underpin integrated service delivery



# The seven areas of focus for Ravenhall

Through providing Better Corrections, Ravenhall Correctional Centre contributes to Safer Victorian Communities. Ravenhall's unique services, interventions and programs respond to the needs of a range of prisoner groups. Ravenhall responds through high intensity programs and community-based services.



GEO would like to acknowledge the traditional owners of the land on which Ravenhall is located, the people of the Kulin Nation. We pay respect to their Elders both past and present.

GEO acknowledges a responsibility to the environment, and we express our commitment towards implementing practices which will promote environmental sustainability.